

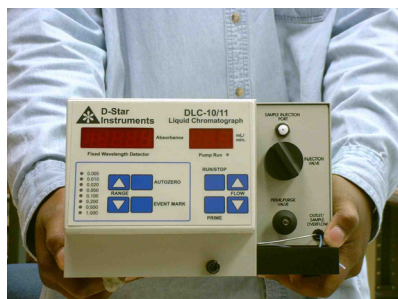
# DLC-10 Series Isocratic HPLC with Fixed Wavelength Detector

***No Frills HPLC at an affordable price !!***

D-STAR INSTRUMENTS presents the flagship of its new line of high performance, isocratic liquid chromatography systems. It includes a fixed wavelength absorbance detector, pump and injection valve. These units provide a very price competitive alternative when compared to all the other systems in today's market.

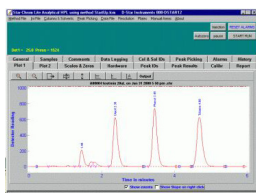
The DLC-10 offers the best price/performance ratio in the market. And in today's economy, isn't that what is important. You need performance that meets your requirements at a price that meets your budget.

***Why waste money on performance specifications and features that you will never use ?***



## Important DLC-10 Features

- UV-VIS operation from 214nm to 800nm (depends on lamp and filter selected).
- Double beam optics (Reference and Sample Paths).
- Flowcells are also available for prep and microbore in PEEK or Stainless Steel construction.
- Sensitivity levels available for over 95% of all applications.
- All wettable components are constructed of PEEK or Stainless Steel, Teflon, Tefzel, and quartz, making the system totally compatible with HPLC or biocompatible solvents.
- Flow rate from 0.01 to 9.99mL/min, 3,500psi (higher pressures available).
- Injection valve.
- Analog outputs for absorbance and wavelength available at rear of instrument.
- Contact closures output for data acquisition start.



*DLC-10 PLUS with software*

The **DLC-10** is available with three software options. When packaged with our Star-Chrom LITE you have a simple, easy to use package with data acquisition / data integration without unnecessary bells and whistles.

The **DLC-10 PLUS** has Star-Chrom LITE built into the system so that here is no additional box. Just add a computer and you have a complete automated HPLC system. In addition to what is included with Star-Chrom LITE we add pump control and a pressure transducer.

The **DIS-10** includes the full Star-Chrom HPLC software and interface box. Just add a computer and you have a complete automated HPLC system. This includes pump control with pressure transducer. Also, this system has two detector inputs, autosampler control and can be upgraded to gradient operation.



D-Star Instruments, Inc. • 8424 Quarry Rd., Manassas, VA 20110  
Phone: 703-335-0770 • Fax: 703-335-9952 • WWW.D-STAR.COM

# DLC-10 Series Specifications

## Detector Specifications:

**Wavelengths:** DLC-10:254nm only; DLC-10C: 254nm convertible; DLC-11: 214,229,254,280,365,415,505 and others

### Flowcells:

Analytical: 7mm pathlength, 10ml volume, 200 psi; wetted materials:

PEEK or SS, quartz or sapphire, Tefzel, Teflon; 1/16" O.D. tubing.

Preparative: 2.0 mm pathlength, 4 ml volume, 100 psi; wetted materials:

PEEK or SS, quartz or sapphire, Tefzel, Teflon, 1/8" O.D. tubing.

**Linearity:** Better than 2%

**Stability (Drift):** Less than  $5 \times 10^{-4}$  AU/Hr (at 254 nm and constant temperature)

**Noise:** Less than  $\pm 5 \times 10^{-5}$  AU ( $5 \times 10^{-5}$  AU peak to peak) at 254nm and constant temperature

**Recorder Output (A):** 10mV

**Integrator Output:** 1.0 V/AU to 2V (Equivalent to 2.0 AU)

**Display:** Absorbance: 4.5 digits to 1.999 AU

**Absorbance Ranges:** 0.005, 0.01, 0.02, 0.05, 0.10, 0.20, 0.50, 1.0 AU

**Front Panel Controls:** Range selection, Autozero, Event Mark

**Rear Panel Controls:** Subminiature D-type, 15 position female connector for detector recorder/ integrator output, and remote control, Event Mark, Autozero.

## Pump Specifications:

**Flow Rate:** 0.01 to 9.99 mL/min

**Pressure:** 0-3500 PSI for 10 mL head (SS or PEEK) [5000 PSI with High Press. Option "P" version SS only]

**Flow Accuracy:** 3% for flowrates of 0.33 mL/min and above; 0.01 mL/min for flowrates below 0.33 mL/min

**Seal Flush:** continuous flush of piston seal to minimize buffer problems

**Precision:** 0.5% RSD

**Front Panel:** Flow rate.

**Controls:** Front panel control for flow control and diagnostics: Flowrate display; Run/Stop Key;

Scrolling Keys for increasing/ decreasing flow rate; Prime Key; Pump Run Status LED; Compressibility

**Rear Panel:** 6 pin RJ-11: RS-232 for remote pump control, DB-15F for Hand-held Controller

**Power entry module:** 110/115, 220/230V factory preset

**Integrated Prime/Purge Valve:** PEEK with 0.0625" port diameter and fittings; 5000 PSI; wetted materials: Stainless or PEEK, Teflon™ and Tefzel

**Pulse Damper:** mobile phase in contact with damper: 1.2 mL at 6000 PSI; wetted materials: Stainless or PEEK and inert diaphragm; compressible fluid: isopropanol

**Pressure Transducer:** Rated to at least 10,000 psi ( included with "Plus" version, optional with standard version)

**Injection Valve:** Stainless or PEEK ; 20 uL sample loop; position sensor (event); Sample Injection Port ; user changeable sample loops.

## Models Available:

DLC-10, DLC-10C, DLC-10CP, DLC-10 Plus, DLC-10P Plus, DLC-11C, DLC-11P, DLC-11C Plus, DLC-11CP Plus, DIS-10/11, DIS10/11P, DGS-10/11, DGS10/11P



D-Star Instruments, Inc. • 8424 Quarry Rd., Manassas, VA 20110  
Phone: 703-335-0770 • Fax: 703-335-9952 • WWW.D-STAR.COM